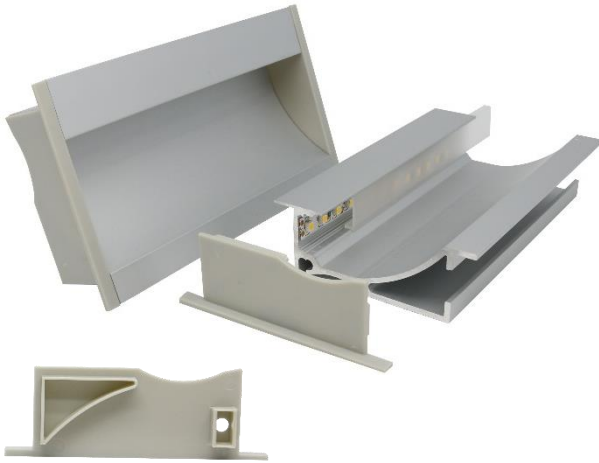
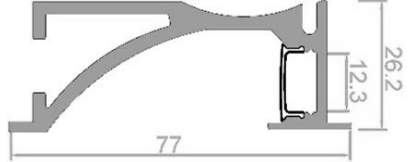


E723-R



- Aluminium recessed extrusion
- LED profile for light washing
- Perfect for softly illuminating walls and spilling light across the floors such as in hallways or recessed in ceilings

DIMENSION:	H: 77mm W: 26.2mm L: 2000mm	
MAX WATTAGE:	19.2W/M	
FINISHES:	15 micron clear anodised (suitable for exterior applications) 25 micron (suitable for salt environments) available on request Other finishes POA	
DIFFUSER OPTIONS:	German engineered Australian made opal matte diffuser specifically designed for LED. Semi-clear snap in polycarbonate (PVC) diffuser.	

QUOTES & ORDERING

contact us

Unit 10/595 Princes Highway Tempe NSW 2044

P: 02 8577 6444 M: 0433 995 338

E: sales@idealled.com.au W: www.idealled.com.au