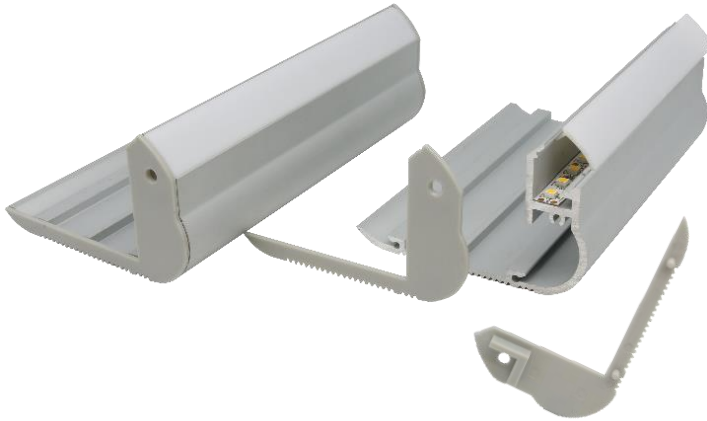


# E724

# iDEAL LED



- Aluminium heavy duty bullnose extrusion
- Stair LED profile with non-slip grooves and curved edges
- Subtly lights the step and riser while the robustness of the fitting is designed to handle high traffic zones

<b>DIMENSION:</b>	H: 50.5mm   W: 80mm   L: 2000mm	
<b>MAX WATTAGE:</b>	9.6W/M	
<b>FINISHES:</b>	15 micron clear anodised (suitable for exterior applications) 25 micron (suitable for salt environments) available on request Other finishes POA	
<b>DIFFUSER OPTIONS:</b>	German engineered Australian made opal matte diffuser specifically designed for LED. Semi-clear and clear snap in polycarbonate (PVC) diffuser.	

**QUOTES & ORDERING**

**contact us**

Unit 10/595 Princes Highway Tempe NSW 2044

P: 02 8577 6444 M: 0433 995 338

E: sales@idealled.com.au W: www.idealled.com.au