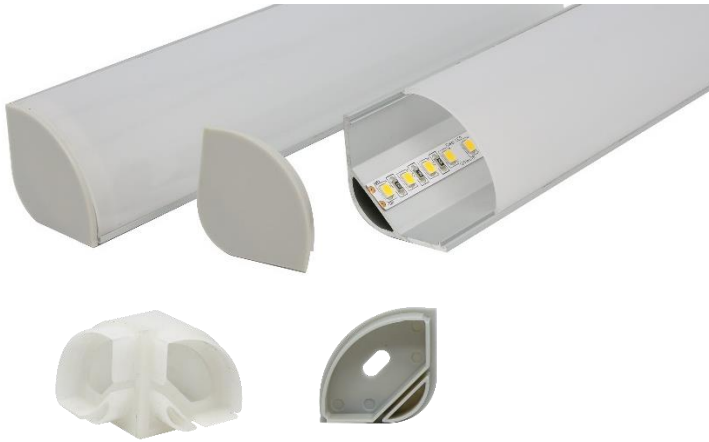


# E816



- Australian made aluminium extrusion
- Large 45° LED profile – curved diffuser
- For use with high output LED ribbon due to its wide 20mm base
- Designed for installing onto ceiling cornices to throw light across the ceiling and down the wall. Can also be used within a shadow line for reflective lighting

<b>DIMENSION:</b>	H: 30mm   W: 27mm   L: 3000mm	A technical drawing of the LED profile cross-section. It shows a semi-circular diffuser on top of a rectangular base. The total height is 30mm, the base width is 20.2mm, and the diffuser width is 26.5mm.
<b>MAX WATTAGE:</b>	20W/M surface mounted	
<b>FINISHES:</b>	15 micron clear anodised (suitable for exterior applications) 25 micron (suitable for salt environments) available on request Other finishes POA	
<b>DIFFUSER OPTIONS:</b>	German engineered Australian made opal matte diffuser specifically designed for LED. Opal PMMA and semi clear snap in polycarbonate diffuser	

## QUOTES & ORDERING

## contact us

Unit 10/595 Princes Highway Tempe NSW 2044

P: 02 8577 6444 M: 0433 995 338

E: sales@idealled.com.au W: www.idealled.com.au