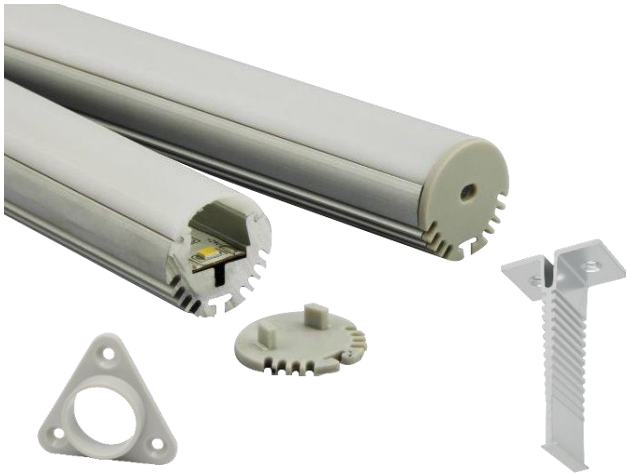
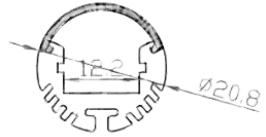


# ER001-ROBE RAIL



- Robe Rail aluminium profile
- Can be installed wall to wall or suspended using wire cable kit
- Max wattage up to 20W/M
- Picture mounting and adjustable wall mounting brackets available

<b>DIMENSION:</b>	D: 20.8mm   L: 2000mm	
<b>MAX WATTAGE:</b>	20W/M	
<b>FINISHES:</b>	10 micron clear anodised Other finishes available on request	
<b>DIFFUSER OPTIONS:</b>	German engineered Australian made opal matte diffuser specifically designed for LED. Semi-clear and clear snap in polycarbonate (PVC) diffuser	

**QUOTES & ORDERING**  
**contact us**

Unit 10/595 Princes Highway Tempe NSW 2044

P: 02 8577 6444 M: 0433 995 338

E: sales@idealled.com.au W: www.idealld.com.au