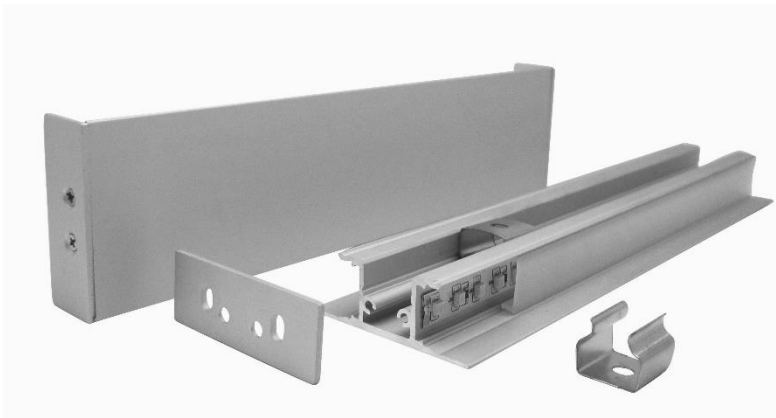


# E750



- Aluminium extrusion
- Heavy duty LED profile for up and down wall washing
- Perfect for general wall lighting in commercial and residential applications
- Easy mounting clip installation

<b>DIMENSION:</b>	H: 48.5mm   W: 17.7mm   L: 2000mm	
<b>MAX WATTAGE:</b>	2 x 14.4W/M	
<b>FINISHES:</b>	15 micron clear anodised (suitable for exterior applications) 25 micron (suitable for salt environments) available on request Other finishes POA	
<b>DIFFUSER OPTIONS:</b>	German engineered Australian made opal matte diffuser specifically designed for LED. Semi-clear and frost snap in polycarbonate (PVC) diffuser.	

**QUOTES & ORDERING**  
**contact us**

Unit 10/595 Princes Highway Tempe NSW 2044

P: 02 8577 6444 M: 0433 995 338

E: sales@idealled.com.au W: www.idealled.com.au