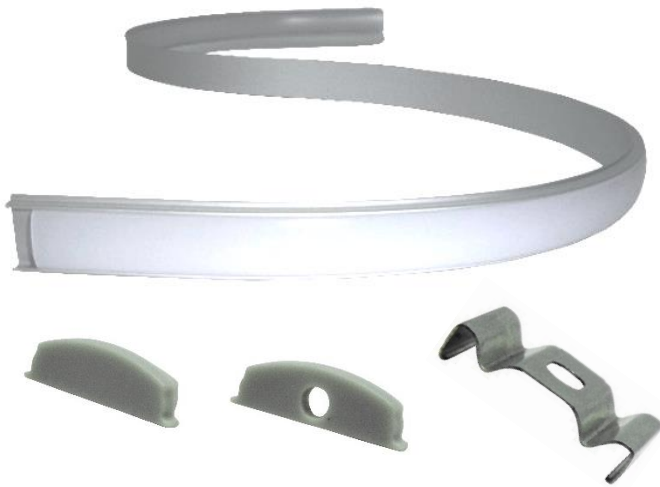
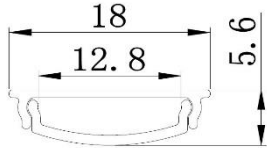


# E7114



- Slimline aluminium LED profile
- Bendable for surface mounting
- For use with maximum 9.6W LED ribbon
- Ideal for wall, cove, ceiling and joinery where flexible curving is required

<b>DIMENSION:</b>	H: 5.6mm   W: 18mm   L: 2000mm	
<b>MAX WATTAGE:</b>	1 x 9.6W/M	
<b>FINISHES:</b>	10 micron clear anodised	
<b>DIFFUSER OPTIONS:</b>	Opal matte snap in polycarbonate (PVC) diffuser	

**QUOTES & ORDERING**  
**contact us**

Unit 10/595 Princes Highway Tempe NSW 2044

P: 02 8577 6444 M: 0433 995 338

E: sales@idealled.com.au W: www.idealled.com.au