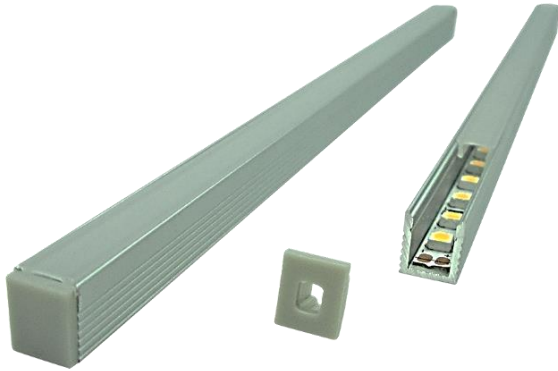
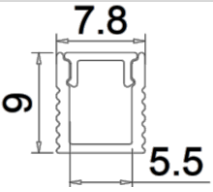


E773

iDEAL LED



- Narrow, shallow aluminium extrusion
- Can be recessed or surface mounted
- Discrete profile which is ideal for stairwells, cabinetry or recessed into suspended beams
- Suitable with 5mm LED ribbon

DIMENSION:	H: 9mm W: 7.8mm L: 3000mm	
MAX WATTAGE:	9.6W/M	
FINISHES:	15 micron clear anodised (suitable for exterior applications) 25 micron (suitable for salt environments) available on request Other finishes POA	
DIFFUSER OPTIONS:	Polycarbonate (PVC) Frosted Diffuser	

QUOTES & ORDERING
contact us

Unit 10/595 Princes Highway Tempe NSW 2044

P: 02 8577 6444 M: 0433 995 338

E: sales@idealled.com.au W: www.idealled.com.au